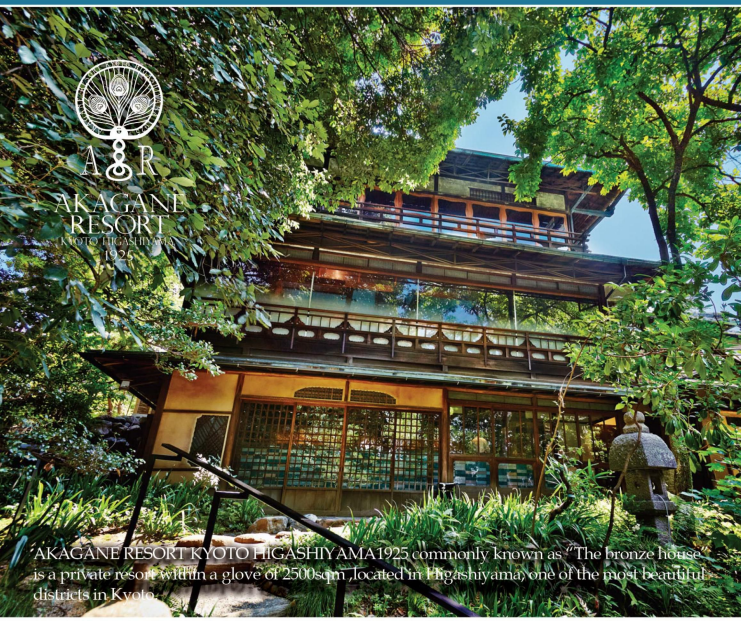




AKAGANE RESORT
KYOTO HIGASHIYAMA 1925



AKAGANE RESORT KYOTO HIGASHIYAMA 1925 commonly known as "The bronze house" is a private resort within a glove of 2500sqm, located in Higashiyama, one of the most beautiful districts in Kyoto.

On a quiet hill of Higashiyama stands an old mansion built by an owner of a well-established copper processing company. AKAGANE RESORT offers you the utmost privacy in one of the most secluded places in Kyoto.

The 2500sqm glove includes several venues such as banquet halls with a capacity of more than a 100 people, a private room for guests less than 10 people, a chef's table for exclusive parties for 11 guests, a white-walled storehouse renovated into a café etc...



THE GUEST ROOM

A room with luxury interior for guests less than 10 people. It is perfect for formal and business dinners.



An impressive Japanese gate

SALON DE KAMBAYASHI

A white-walled storehouse renovated into a café with a stylish space. Kambayashi Syunsho, a well-established Japanese tea store serves you some great green tea and confectionaries. It is perfect for drinks receptions and after parties as well.



KIWAMI

A chef's table where you can enjoy wonderful cuisine cooked with the best ingredients in the best methods, and the special marriage of fine wines selected by our sommeliers. Exclusive for 11 guests at a time.

VENUES

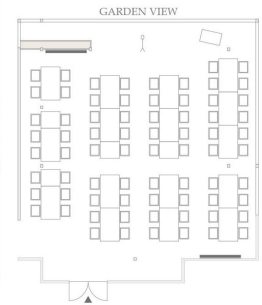
AKAGANE is a banquet hall which used to be an old Japanese house featured with wooden beams and walls decorated with bronze. In contrast HISUI is a new and modern banquet hall with huge windows and high ceiling. Though it is new, it is designed with a mixture of traditional and modern style, which perfectly fits with other old monuments.

AKAGANE

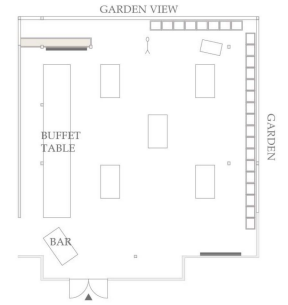
• Floor Area: 100sqm • Capacity: 72 guests (seated)/ 80 guests (standing)



■ Layout example (72 guests seated)



■ Layout example (standing buffet 70 guests)

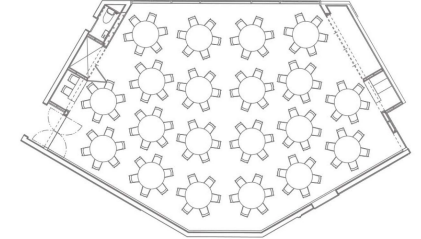


HISUI

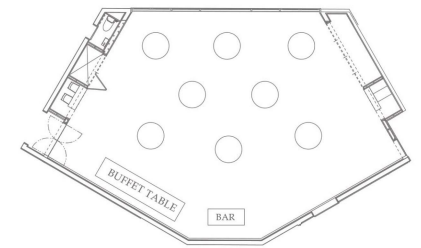
• Floor Area: 136.8sqm • Capacity: 112 guests (seated)/ 100 guests (standing)



■ Layout example (112 guests seated)



■ Layout example (standing buffet 100 guests)



CEREMONY SPACE

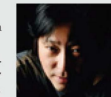
Maximum capacity: 80 guests

CONCEPT

The renovation of the architectures was done by Shuhei Sasaoka from "Wasabi". Utilizing the background that the house used to be built by an owner of a copper processing company, the architect focused on the charm of bronze and peafold. He used bronze as material of the architecture and used peafold as a symbol of the place. Peafold comes from Malachite, the result of copper ores, which is called peafold stone in Japanese. Bronze changes its color from red to blue green. It gets deeper and richer, as if it gets ripen over time. Thus it is perfect for anniversary parties of companies and incentive tours.



SYUHEI SASAOKA



JOTARO SAITO



AKAGANE RESORT
KYOTO HIGASHIYAMA 1925

400-1, Kinencho, Higashiyama-ku Kyoto-shi,
Kyoto, 605-0828, Japan
CLOSED on TUESDAYS

VALUE MANAGEMENT
PARTY INFORMATION DESK
TEL 0120-075-390
MON-FRI 9:00-18:00

<http://www.arkh.jp/party/>

