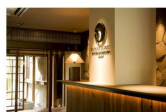


**FUNATSURU**  
KYOTO KAMOGAWA RESORT  
est.1870

FUNATSURU KYOTO KAMOGAWA RESORT is a former inn with a history of more than 140 years standing along the Kamogawa river, and now, it is registered as cultural properties by the Japanese Agency for Cultural Affairs.  
It is on a great location to enjoy the specialty of Kyoto as the cherry blossoms along the Takasegawa river and the Kawayuka (riverside terrace) during the summer.

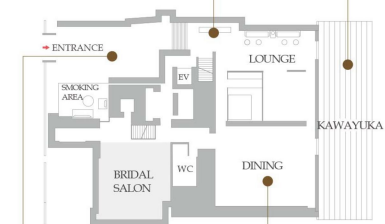
1F



RECEPTION



KAWAYUKA



## ROOFTOP TERRACE & CEREMONY SPACE

FUNATSURU is one of the tallest wooden buildings in Kyoto especially along the Kiyamachi district. On the rooftop of the building, there is a terrace and ceremony space, which are special places with amazing views of the Kamogawa river and Higashiyama, the historical district.

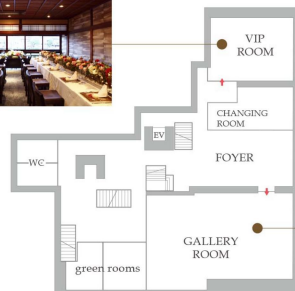


## Kawayuka (Riverside terrace)

Every summer from May to September, more than 90 restaurants and bars make temporary wooden riverside terrace called Kawayuka along the Kamogawa river. The terrace of FUNATSURU is one of the biggest ones in Kyoto where you can enjoy delicious food and drinks with feeling the comfortable river wind and beautiful scenery along the river.



2F



3F



## VENUES

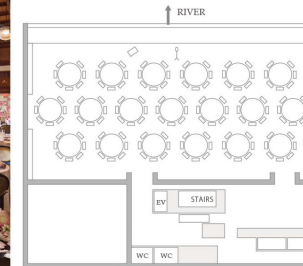
"FUNATSURU KYOTO KAMOGAWA RESORT" is a wooden architecture built almost a 100 years ago, realized with the spirits and technique of traditional craftsmen.  
It is a precious architectural heritage which cannot be built anymore under the current law in Japan.  
Please enjoy the beautiful details of the architecture and the views of the Kamogawa river and Higashiyama which you can see from all of our venues.

### GRAND BALL ROOM

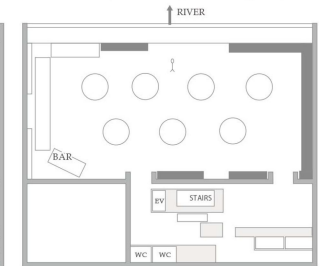
• Floor Area: 315.3sqm • Capacity: 168 guests (seated)/ 200 guests (standing)



■ Layout example (152 guests seated)



■ Layout example (standing buffet 150 guests)

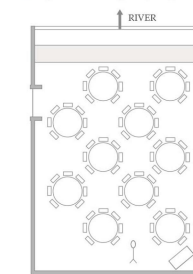


### GALLERY ROOM

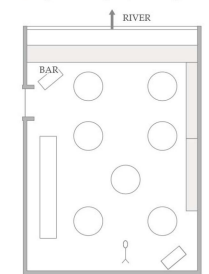
• Floor Area: 157.15sqm • Capacity: 90 guests (seated)/ 100 guests (standing)



■ Layout example (70 guests seated)



■ Layout example (standing buffet 80 guests)

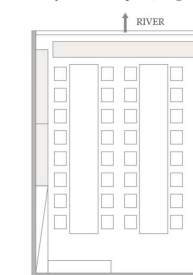


### VIP ROOM

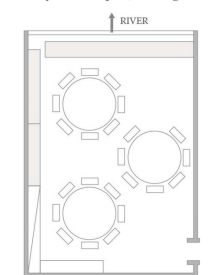
• Floor Area: 67.28sqm • Capacity: 40 guests (seated)



■ Layout example (32 guests seated)



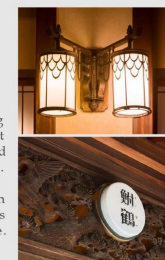
■ Layout example (standing buffet 40 guests)



## HISTORY of FUNATSURU

Kiyamachi street lined with many traditional inns and teahouses, has been featured as a stage in many works of literature.

FUNATSURU has been standing on that street as one of the most famous inns in Kyoto beloved by many artists and celebrities. In 2012, it was registered as cultural properties of the nation in order to preserve the precious Japanese wooden architecture.



FUNATSURU  
KYOTO KAMOGAWA RESORT  
est. 1870

**FUNATSURU KYOTO  
KAMOGAWA RESORT**

180, Minoyacho, Shimogyo-ku  
Kyoto-shi, Kyoto, 600-8015, Japan

CLOSED ON TUESDAYS

VALUE MANAGEMENT  
PARTY INFORMATION DESK  
TEL 0120-075-390  
MON-FRI 9:00-18:00

<http://www.funatsuru.com/party/>

